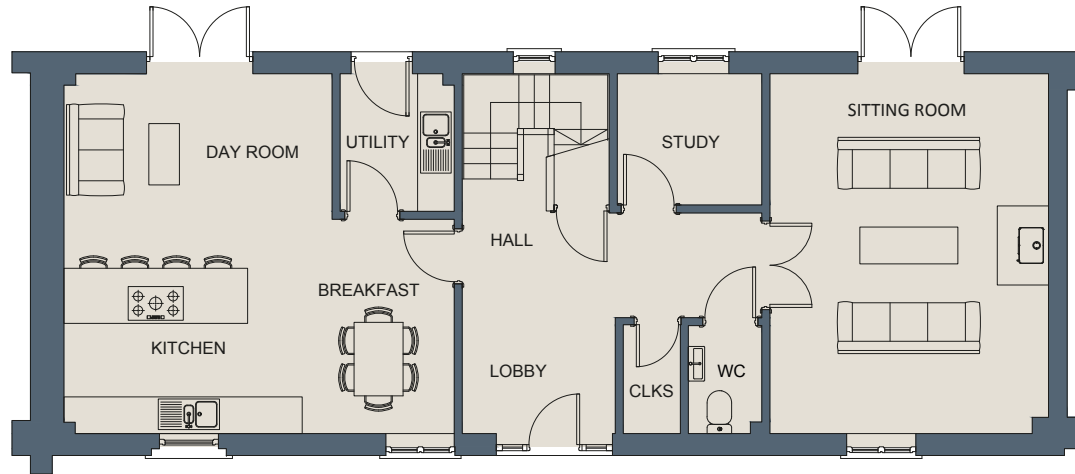
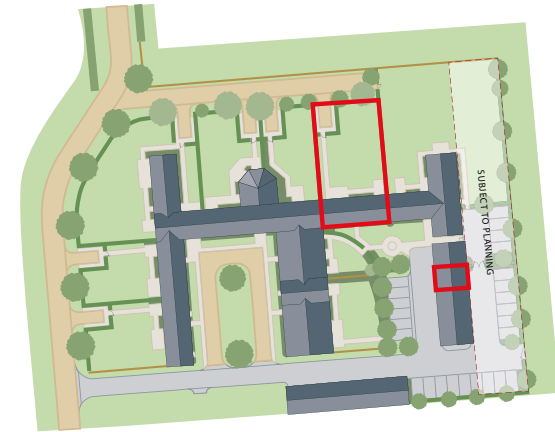
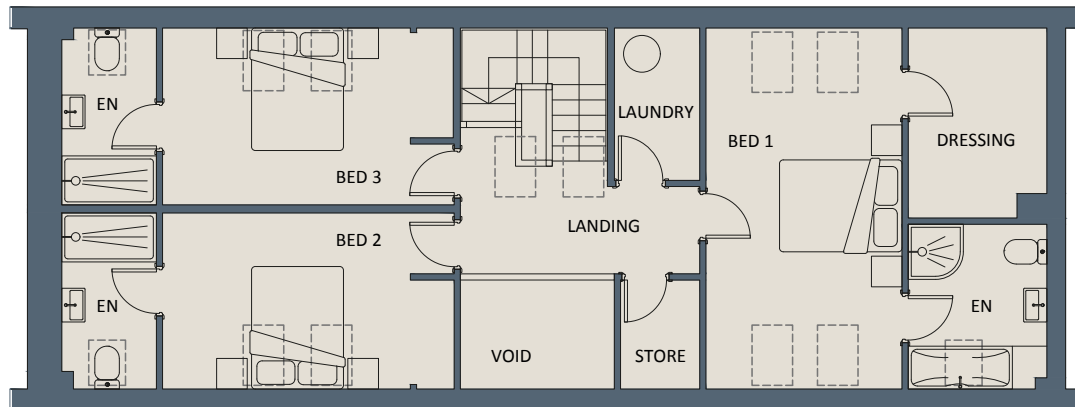


# MULBERRY HOUSE, NO. 5 CHAPEL HOUSE BARN



## GROUND FLOOR

Hall	4.0m x 2.5m	13'1" x 8'2"
WC	1.7m x 1.2m	5'7" x 3'11"
Cloaks	1.7m x 1.0m	5'7" x 3'3"
Kitchen	4.0m x 2.5m	13'1" x 8'2"
Breakfast	3.5m x 2.5m	11'6" x 8'2"
Day room	4.5m x 3.5m	14'9" x 11'6"
Utility	2.3m x 1.9m	7'7" x 6'3"
Sitting	5.9m x 4.5m	19'4" x 14'9"
Study	2.3m x 2.1m	7'7" x 6'11"



## FIRST FLOOR

Bed 1	5.9m x 3.2m	19'4" x 10'6"
Ensuite	2.9m x 2.2m	9'6" x 7'3"
Dressing	2.9m x 2.2m	9'6" x 7'3"
Bed 2	4.7m x 2.9m	15'5" x 9'6"
Ensuite	2.9m x 1.7m	9'6" x 5'7"
Bed 3	4.7m x 2.9m	15'5" x 9'6"
Ensuite	2.9m x 1.7m	9'6" x 5'7"
Laundry	2.5m x 1.4m	8'2" x 4'7"
Store	1.8m x 1.4m	5'11" x 4'7"