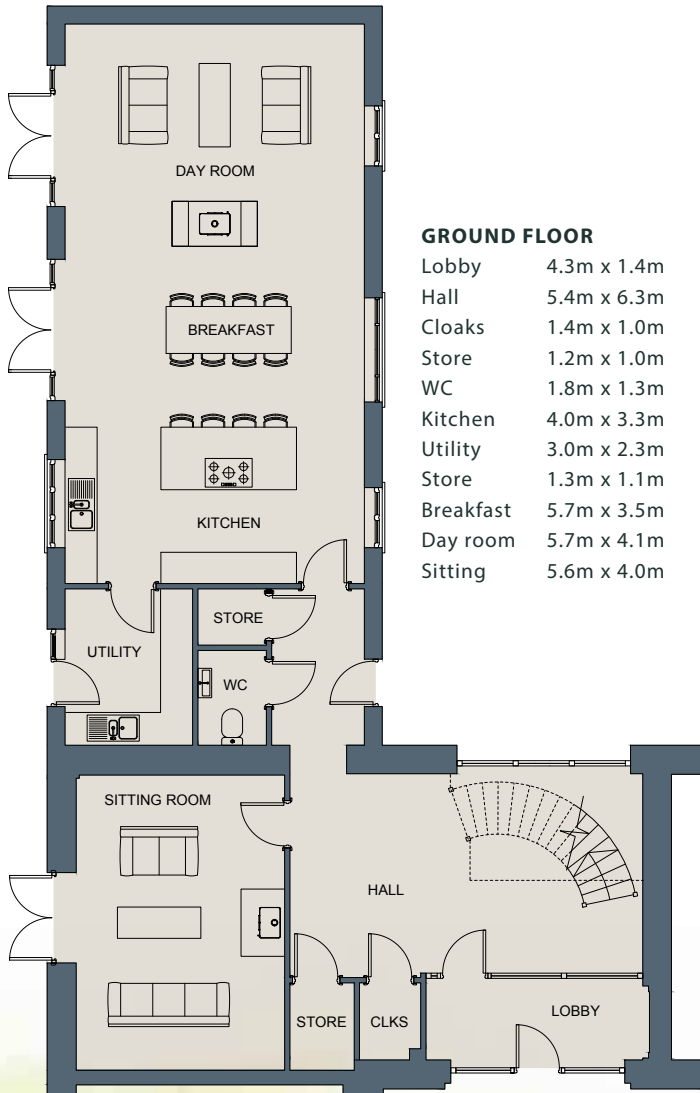
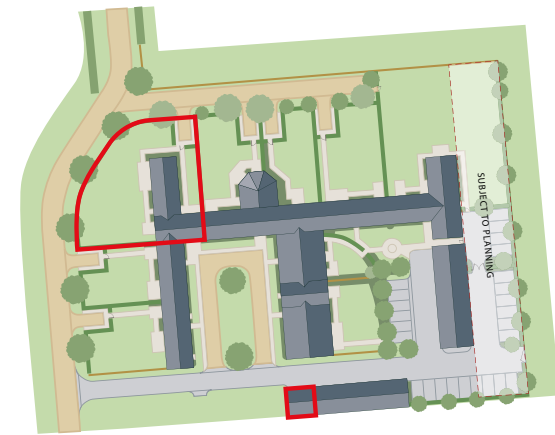
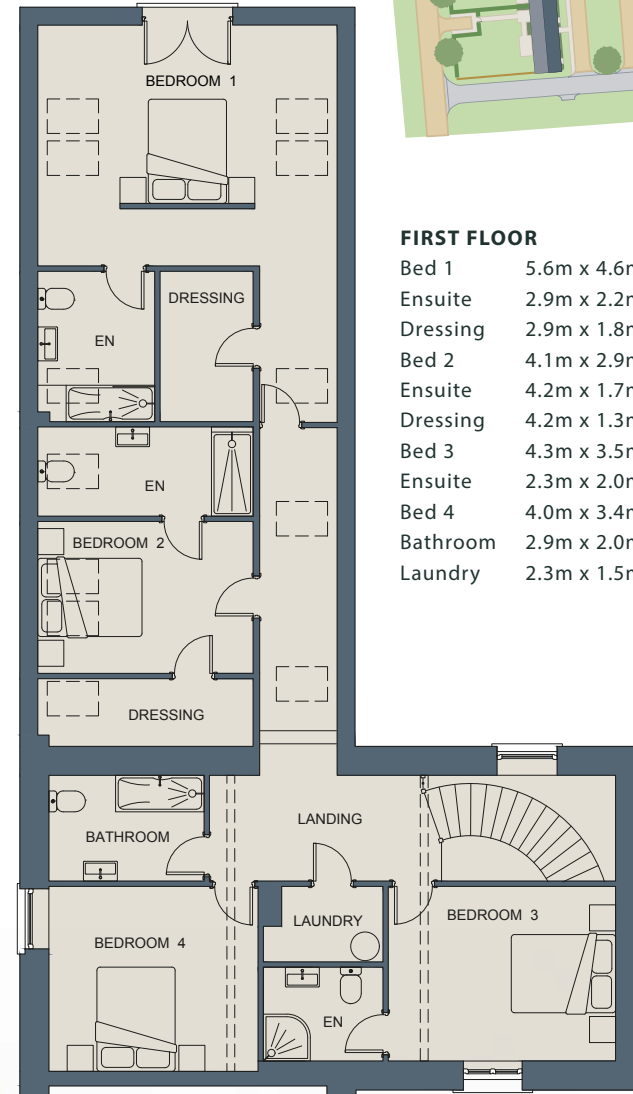


SUNNYMEADE, NO. 3 CHAPEL HOUSE BARN



GROUND FLOOR

Lobby	4.3m x 1.4m	14'1" x 4'7"
Hall	5.4m x 6.3m	17'9" x 20'8"
Cloaks	1.4m x 1.0m	4'7" x 3'3"
Store	1.2m x 1.0m	3'11" x 3'3"
WC	1.8m x 1.3m	5'11" x 4'3"
Kitchen	4.0m x 3.3m	13'1" x 10'10"
Utility	3.0m x 2.3m	9'10" x 7'7"
Store	1.3m x 1.1m	4'3" x 3'7"
Breakfast	5.7m x 3.5m	18'8" x 11'6"
Day room	5.7m x 4.1m	18'8" x 13'5"
Sitting	5.6m x 4.0m	18'4" x 13'1"



FIRST FLOOR

Bed 1	5.6m x 4.6m	18'4" x 15'1"
Ensuite	2.9m x 2.2m	9'6" x 7'3"
Dressing	2.9m x 1.8m	9'6" x 5'11"
Bed 2	4.1m x 2.9m	13'5" x 9'6"
Ensuite	4.2m x 1.7m	13'9" x 5'7"
Dressing	4.2m x 1.3m	13'9" x 4'3"
Bed 3	4.3m x 3.5m	14'1" x 11'6"
Ensuite	2.3m x 2.0m	7'7" x 6'7"
Bed 4	4.0m x 3.4m	13'1" x 11'2"
Bathroom	2.9m x 2.0m	9'6" x 6'7"
Laundry	2.3m x 1.5m	7'7" x 4'11"